

Simplavolt d.c. power units

Totally encapsulated

Constructed to BS3535 and CEE15

Robust, reliable and simple to use

Short circuit protected



A very simple, easy to use d.c. power supply; designed to provide 24V d.c. for powering clutches, brakes, solenoids or any item requiring a well protected unsmoothed supply.

Ordering example

(10) Simplavolt 60 power units – 415 primary voltage

Stockline No. B3-68 964

Technical parameters

	Simplavolt 30	Simplavolt 60	Simplavolt 120
Power, watts	30	60	120
Dimensions L x W x H max	115 x 75 x 77	130 x 87 x 87	166 x 99 x 94
Fixing hole centres x hole diameter	97* x 60 x 4.1	115 x 70 x 5.5	140 x 80 x 6.2
Weight, kg	1.4	2.8	3.6
Maximum ambient temperature	40°C	40°C	40°C
Nominal primary voltage	Stockline No.	Stockline No.	Stockline No.
(a.c. 50/60 Hz) 110 or 220/240	B3-689 3X	B3-689 56	B3-632 19
415	-	B3-689 64	B3-663 32
Fuse (5 x 20 mm), quick blow	1.5A	3A	5A
Fuse (min. order quantity 10)	K4-114 75X	B3-114 768	B3-114 776

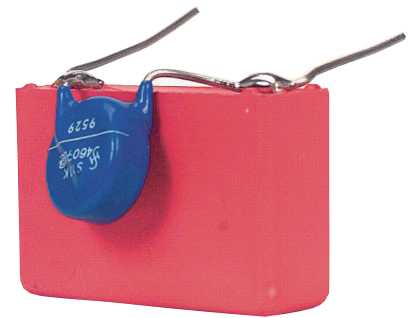
Stockline numbers in black – delivery time on request.

Lenze spark suppressors

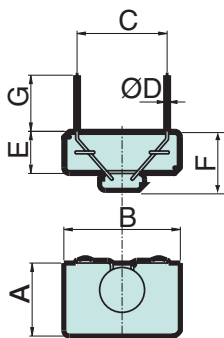
Type 14.198.00.□□□.

- Increase life of switch contacts and coils
- Increase operating safety
- Reduces RFI
- Small and versatile

The suppressor should be connected across the switch contacts.



Lenze compact spark suppressors comprise a high-rated capacitor specially made for a higher current loading and a varistor with a flat characteristic to limit voltage peaks safely. Three models cover the range of d.c. voltages.



Voltage range	A	B	C	D	E	F	G	Type No.	Stockline No.
24-50	18.5	26.5	22.5	0.7	8.5	12.5	25	14.198.00.01 – 24V	B5-126 39X
50-120	26	41.5	37.5	0.7	15	21	20	14.198.00.02 – 96V	B5-127 17X
120-200	24	41.5	37.5	0.7	13	20	15	14.198.00.03 – 190V	B5-114 540
200-250	24	41.5	37.5	0.7	13	20	15	14.198.00.04 – 250V	B5-286 350