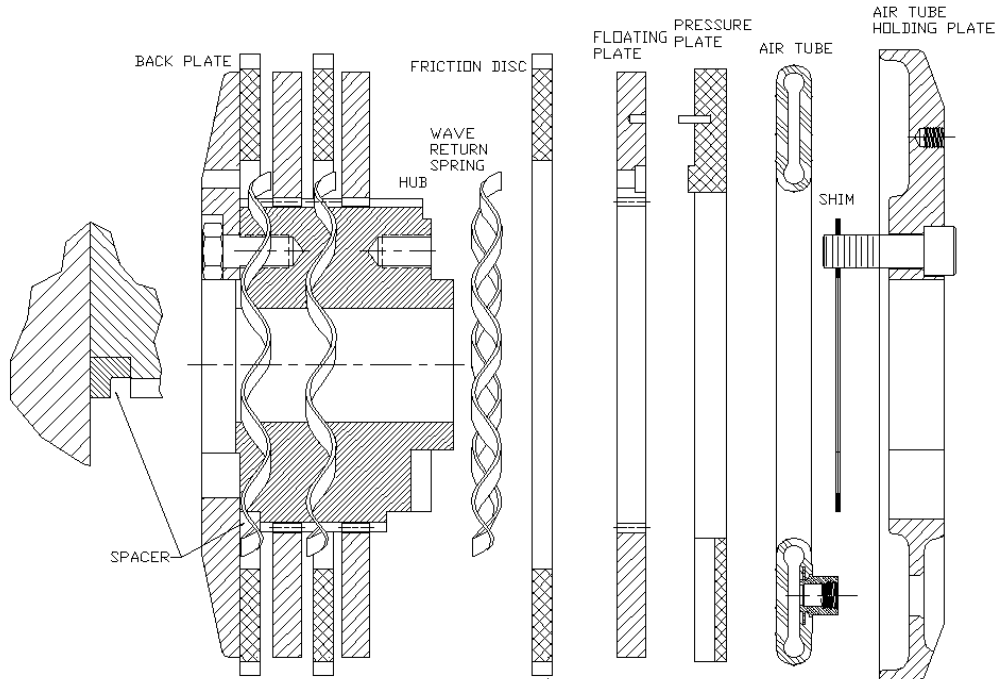


## WPT WAVE SPRING CONVERSION KIT

### TO CONVERT FROM COIL SPRINGS TO WAVE SPRINGS IN WPT® AND WICHITA® CLUTCHES



1. IF REBUILDING THE CLUTCH FROM THE BACKPLATE END, REMOVE THE BACKPLATE AND INSTALL THE SPACER RING ON HUB AS SHOWN. DISCARD COIL SPRINGS AND REASSEMBLE THE CLUTCH WITH ONE WAVE SPRING INSIDE EACH FRICTION DISC.
2. IF REBUILDING THE CLUTCH FROM THE AIR TUBE HOLDING PLATE END, OR IF THE HUB AND BACKPLATE ARE ONE PIECE, THE SPACER RING MUST BE SPLIT IN EQUAL HALVES AND PLACED IN THE GROOVE BETWEEN THE HUB TEETH AND THE BACKPLATE. DISCARD COIL SPRINGS AND REASSEMBLE THE CLUTCH WITH ONE WAVE SPRING INSIDE EACH FRICTION DISC. (SOME EARLY ONE PIECE HUB AND BACKPLATES MAY NOT HAVE THE 5/8" LENGTH REQUIRED. IN THIS CASE, THE RING MUST BE FACED OFF OR SHIMMED.)