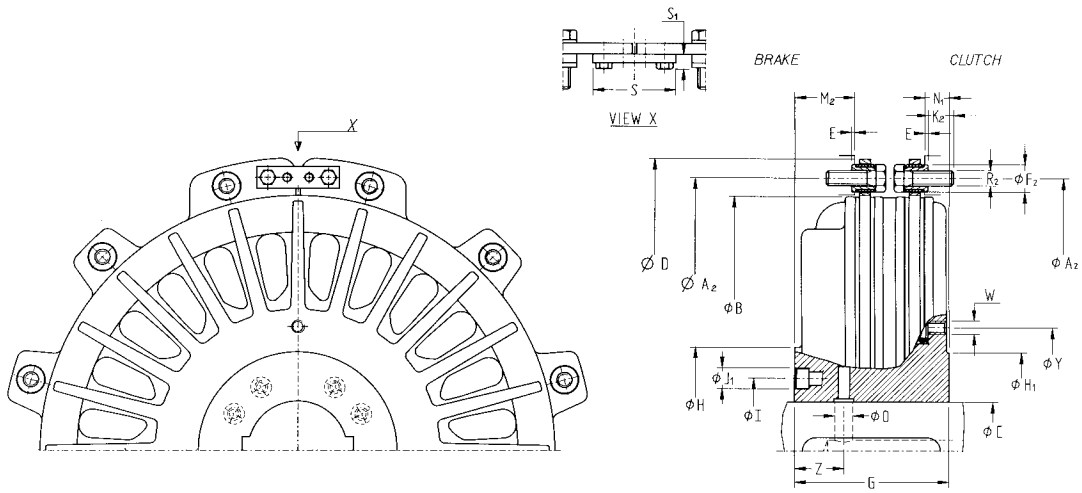
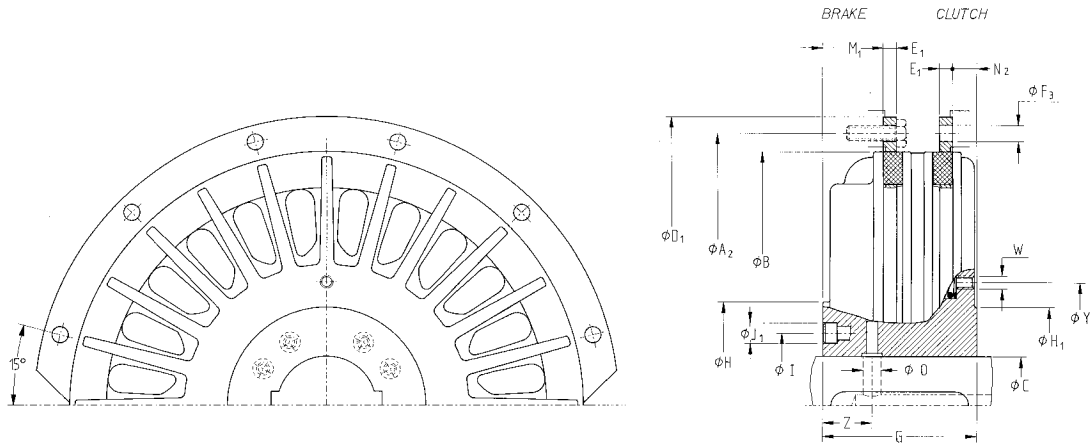


Serie 575..WD

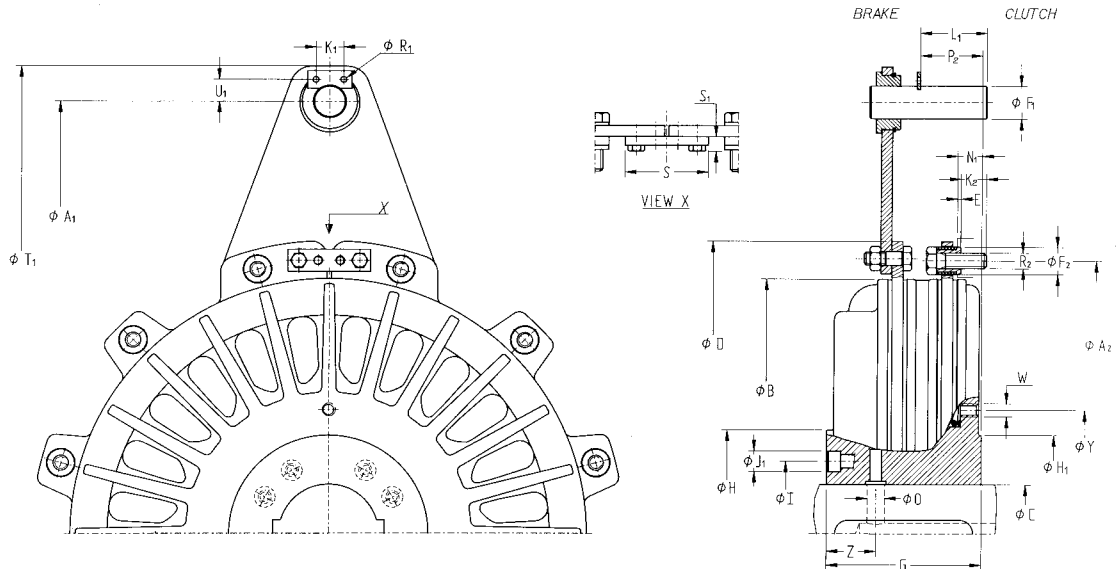
GOIZPER



Serie 575..WA



Serie 576..WD



SIZE		05	11	23	50	10	13	18	19	25	36	37	55	75	76	77	78
Clutch torque Brake torque	Nm	55	110	260	620	1300	1300	2500	2500	3500	5100	5100	9200	12200	19200	27500	36000
		25	55	180	450	950	950	1800	1800	2500	3700	3700	6200	8200	12000	18500	24000
Pressure	bar	5.5															
Max. speed	min ⁻¹	3500	3200	2700	2250	1750	1750	1450	1450	1300	1200	1200	1000	900	800	750	700
Weight	575 WD	5.5	6.5	8	15	24	25	43	44	58	80	80.5	138	185	255	421	575
	575 WA	-	-	-	-	24	25	45	46	60	82	82.5	139	191	265	406	570
	576 WD	5.5	6.5	8.5	16	25	26	45	46	61	84	84.5	144	195	262	418	615
J int.	Kgm ²	0.006	0.013	0.022	0.05	0.173	0.173	0.5	0.5	0.84	1.41	1.41	3.81	5.58	10.5	19.27	30.65
J. ext.	575 WD	0.006	0.007	0.008	0.027	0.062	0.062	0.202	0.202	0.382	0.53	0.53	1.04	1.55	3.34	6.51	10.7
	575 WA	-	-	-	-	0.045	0.045	0.131	0.131	0.26	0.341	0.341	0.881	1.26	2.24	3.87	9.5
	576 WD	0.006	0.007	0.008	0.027	0.062	0.062	0.202	0.202	0.382	0.53	0.53	1.04	1.55	3.34	6.51	10.7
New volumen Max. wear. vol.	dm ³	0.02 0.045	0.035 0.075	0.072 0.12	0.145 0.273	0.276 0.462	0.276 0.462	0.43 0.74	0.43 0.74	0.58 0.98	0.74 1.26	0.74 1.26	1.45 2.5	1.76 3.12	2.84 5.2	4.45 8.26	5.2 10.2
Ø A ₁ Ø A ₂ Ø B		-	-	325	410	490	490	635	635	710	790	790	885	990	1135	1235	1450
		135	173	205	255	325	325	408	408	450	500	500	584	640	725	810	890
		120	158	188	236	305	305	380	380	420	466	466	543	593	675	755	830
Ø C	Min.	14	19	25	30	35	35	45	45	45	50	50	64	90	100	125	125
	Max.	24	35	35	52	65	65	90	90	95	110	110	150	165	180	180	200
Ø D Ø D ₁ E E ₁		151	192	226	275	347	347	435	435	482	535	535	620	680	775	865	950
		-	-	-	-	345	345	430	430	480	530	530	620	680	770	860	945
		2	2	2	2	3	3	3	3	3	3	3	3	5	5	5	10
		-	-	-	-	9	7	10.5	9	10	12	11.5	14	14.5	17	18.5	24
Ø F ₁ Ø F ₂ Ø F ₃	12 x 30°	-	-	14	14	14	14	22	22	30	30	30	30	40	45	45	65
	12 x 30°	9 (6)	10 (6)	10	12	15	15	18	18	22	25	25	25	30	35	40	45
	12 x 30°	-	-	-	-	8.5	8.5	10.5	10.5	12.5	15	15	15	17	21	25	25
G		42	50	58	66	82	82	100	112	125	125	140	160	185	205	230	248
Ø H Ø H ₁		60	65	70	97	125	125	153	153	165	190	190	245	270	310	320	345
		60	65	70	90	130	130	145	145	165	180	180	250	270	290	320	350
Ø I Ø J ₁		35	47	47	65	81.5	81.5	109	109	116	133	133	190	214	240	256	285
		9	9.5	9.5	10.5	13.5	13.5	13.5	13.5	17	19	19	20	20	26	24	26
K ₁ K ₂		-	-	20	20	20	20	25	25	25	25	25	25	35	35	35	45
		8	8	8	12	13	14	16	16	20	20	23	24	28	38	43	45
L ₁		-	-	28	28	28	28	45	45	60	60	60	60	80	90	90	130
M ₁ M ₂		-	-	-	-	27	26.5	33	47	50	38.5	55	63	79	85	95	99
		13	15	18	20	24	26.5	31.5	47	50	32	55	63	79	85	95	99
N ₁ N ₂		5	6	9	11	14	14	14.5	16	18	17	22	25	27	29	34	38
		-	-	-	-	14.5	14	15	16	18	21	22	25	27	29	34	38
Ø O P ₂	2 x 180°	4	5	6	6	10	10	12	13	14	14	16	18	20	21	23	25
		-	-	16	30.5	34	39	38	40	47	59	56	67.5	68.5	80.5	95	94
Ø R ₁ Ø R ₂	12 x 30°	-	-	4.5	4.5	4.5	4.5	5.5	5.5	5.5	5.5	5.5	5.5	6.5	6.5	6.5	8.5
		M.4(6)	M.5(6)	M.5	M.6	M.8	M.8	M.10	M.10	M.12	M.14	M.14	M.14	M.16	M.20	M.24	M.24
S S ₁		30	38	38	46	56	56	70	70	75	75	75	84	96	110	120	138
		6	5.8	5.8	6.5	9.5	9.5	10.5	10.5	13.5	13.5	13.5	17	17	20	21	24
Ø T ₁		-	-	361	446	527	527	680	680	775	855	855	950	1075	1235	1335	1595
Ø U ₁		-	-	11	11	11	11	16	16	20	20	20	20	27	29.5	29.5	43.5
W Ø Y Z		M.5	M.5	M.6	M.6	M.8	M.8	M.8	M.8	M.10	M.12	M.12	M.16	M.16	M.16	M.16	M.18
		35	47	47	113	146	146	182	182	200	226.5	226.5	290	329	373	290	320
		12	16	17	18.5	21	23	26	27	30	31	33	37.5	44	47	55	60