

INDUSTRIAL CLUTCH PARTS

ICP

BRAKE CALIPERS

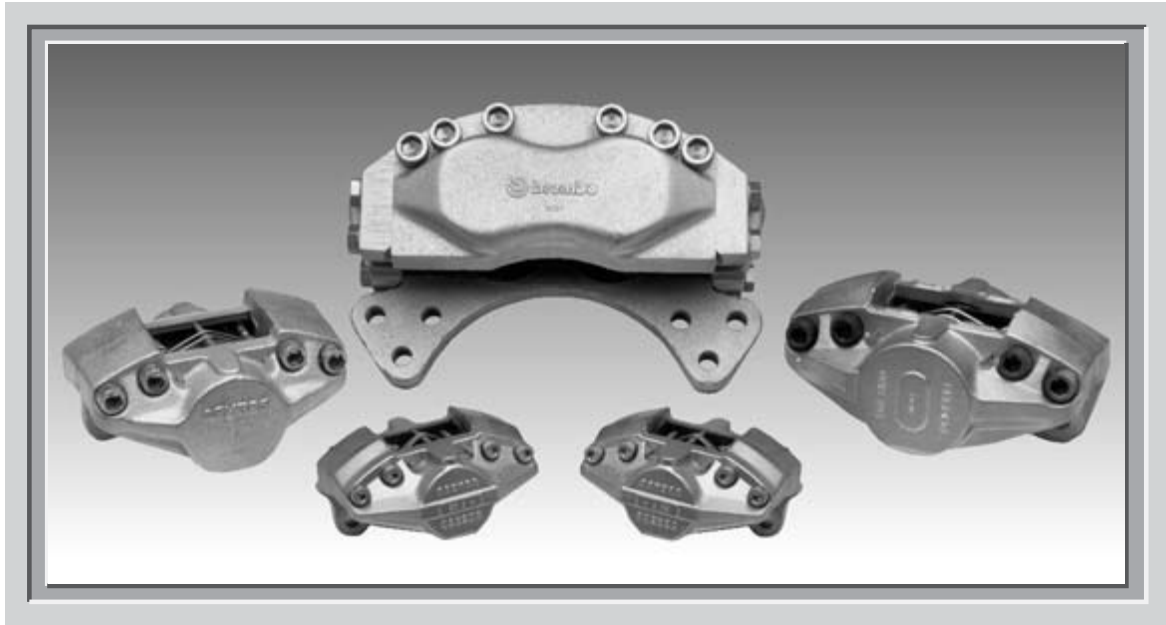


**ENGINEERED BY
brembo**



www.IndustrialClutch.com

brake **CALIPERS** **PINZE** freno



Besides of being the sole distributor of Brembo products for the industrial sector, Vimoter has recently acquired the equipments and relative know-how from the same to produce five groups of calipers directly . Vimoter's competitiveness and flexibility, together with Brembo's project aknowledgegements enable to offer a fully reliable product , which is also marked "Engineered by Brembo".

Distributore da diversi anni dei prodotti Brembo per il settore industriale, Vimoter ha acquistato dalla stessa Brembo le attrezzature ed il relativo know-how del ramo d'azienda per la produzione di pinze freno per il settore industriale. La competenza e la flessibilità della Vimoter unite all'esperienza progettuale della Brembo permettono di offrire un prodotto conveniente e di assoluta affidabilità, contraddistinto dal marchio "Engineered by Brembo".

All our products arise from the cooperation between our technical dept.and the client's one.Do not hesitate to contact us since the first stages of your machine's development.

Tutti i nostri prodotti nascono dalla collaborazione tra il nostro Ufficio Tecnico e quello del cliente. Contattateci fin dalle prime fasi di sviluppo della vostra macchina.

ENGINEERED BY
brembo

www.IndustrialClutch.com

INDICE

INDEX

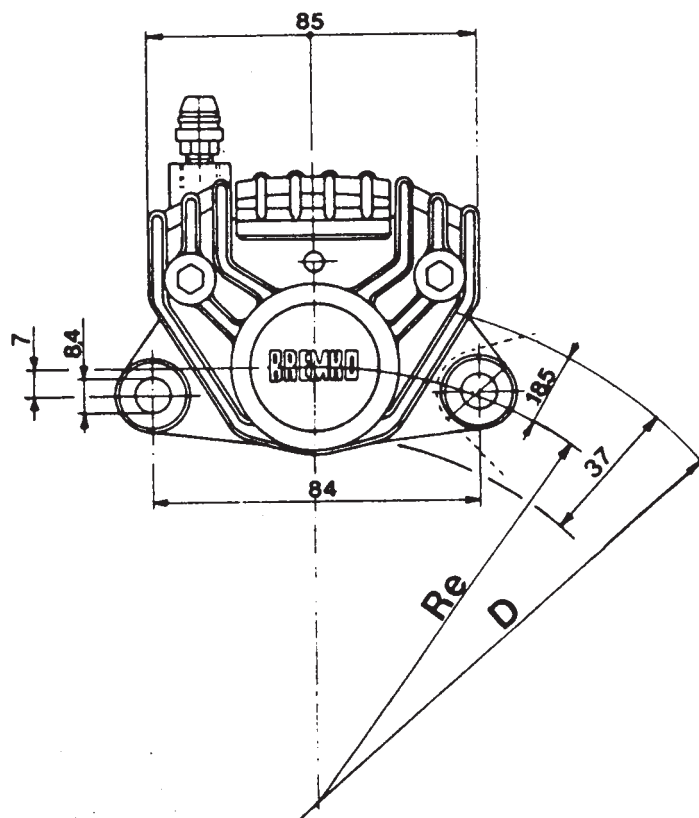
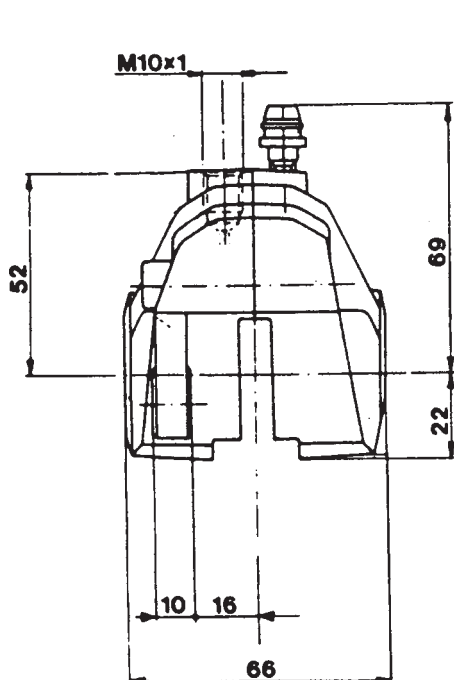
Type Tipo	Part. no. CODICE	Pag.
P32e	20.5161.51	3
P2F08N/3	20.3556.40/41	4
P38d	20.2945.12	5
P48d	20.3195.11/31/51/71	6
P48d	20.4522.11/31	7
P60a	20.2846.11/31/51/71	8
P60a	20.3662.50	9
P75b	20.2802.11/31/51/71	10
P75b	20.3100.31	11
P4.40a	20.4940.11/21 20.4950.11/21	12
P4.42	20.4910.12/22	13
P4.44	20.5150.10/20	14
P4.75a	20.2899.13	15
P4.75a	20.2899.74/84	16
Ricambi		17





Pinza idraulica Hydraulic brake caliper

P32e
20.5161.51



Caratteristiche Tecniche Technical characteristics

Materiale costruzione
Construction material **alluminio**
aluminium

Numero e diametro pistoni
Pistons number and diameter **2x32 mm**

Pressione max di funzionamento
Max operating pressure **100 bar**

Numero e superficie pastiglie
Pads number and area **2x12 cm²**

Diametro disco (D)
Disc diameter **da 150 a 290 mm**

Spessore disco max e min usurato
Disc thickness, max and min worn **7 - 5,6 mm**

Assorbimento volumetrico a 100 bar
Fluid displacement at 100 bar **0,85 cm³**

Posizione di montaggio
Mounting location **ore 12**

Raggio efficace (Re)
Effective rolling radius (Re) **(D/2)-18,5 mm**

Massa (con pastiglie)
Weight (with pads) **0,53 Kg**

Fluido di azionamento - Actuation fluid:

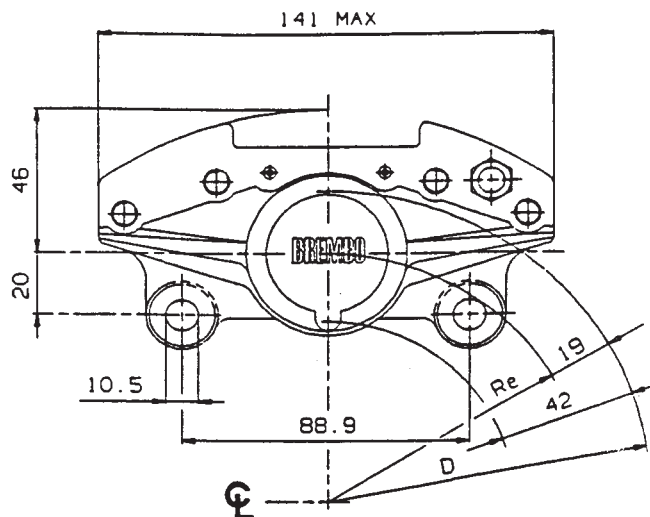
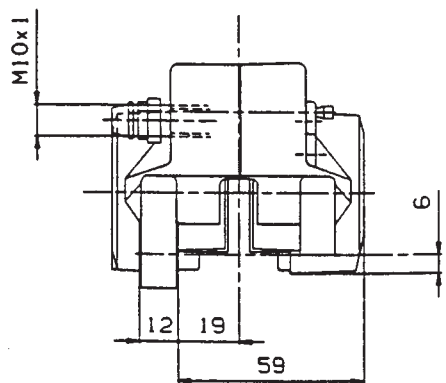
dis. 20.5161.51 liquido freni - **Brake fluid**



Pinza idraulica

Hydraulic brake caliper

P38d
20.2945.12



Caratteristiche Tecniche

Technical characteristics

Materiale costruzione <i>Construction material</i>	alluminio <i>aluminium</i>
Numero e diametro pistoni <i>Pistons number and diameter</i>	2x38 mm
Pressione max di funzionamento <i>Max operating pressure</i>	70 bar
Numero e superficie pastiglie <i>Pads number and area</i>	2x18,8 cm²
Diametro disco (D) <i>Disc diameter</i>	da 160 a 300 mm
Spessore disco max e min usurato <i>Disc thickness, max and min worn</i>	6,6 - 5,8 mm
Posizione di montaggio <i>Mounting location</i>	ore 3-9
Raggio efficace (Re) <i>Effective rolling radius (Re)</i>	(D/2)-19 mm
Massa (con pastiglie) <i>Weight (with pads)</i>	0,96 Kg

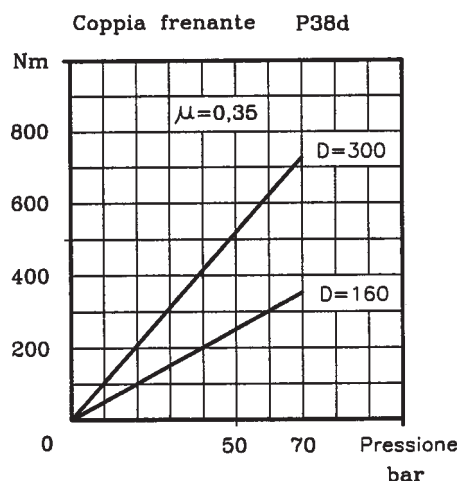
Fluido di azionamento - Actuation fluid:

dis. 20.2945.12

liquido freni - Brake fluid

Prestazioni

Performances



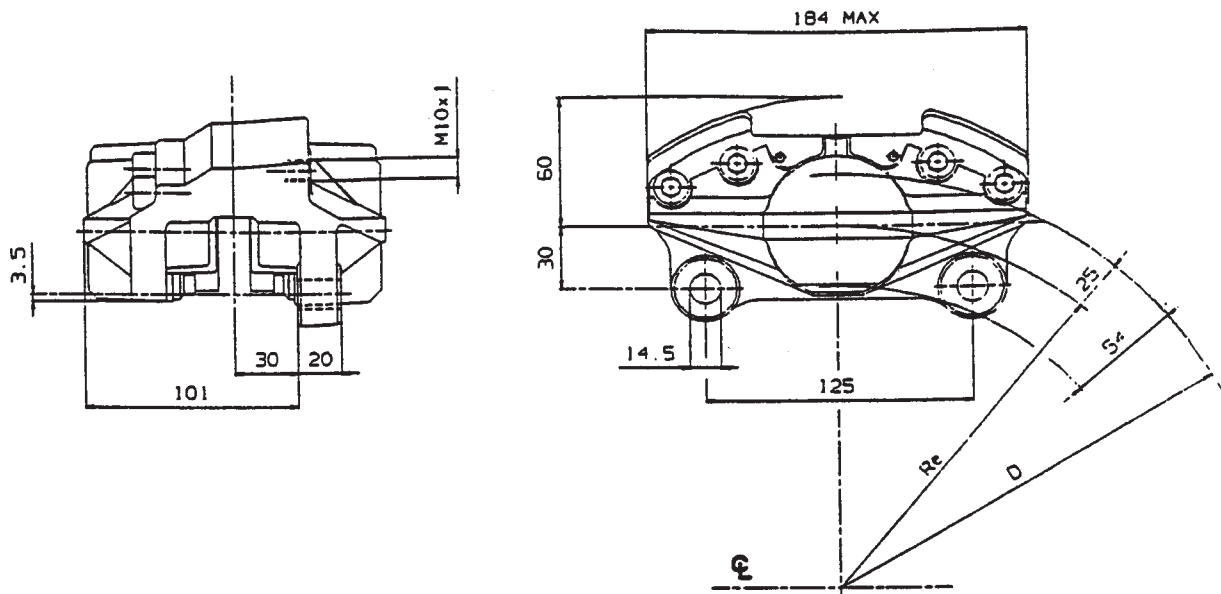
ENGINEERED BY
brembo

Pinza idraulica

Hydraulic brake caliper

P48d

20.3195.11/31
.51/71



Caratteristiche Tecniche

Technical characteristics

Materiale costruzione
Construction material **ghisa**
cast iron

Numero e diametro pistoni
Pistons number and diameter **2x48 mm**

Pressione max di funzionamento
Max operating pressure **150 bar**

Numero e superficie pastiglie
Pads number and area **2x37 cm²**

Diametro disco (D)
Disc diameter **da 200 a 400 mm**

Spessore disco max e min usurato
Disc thickness, max and min worn **13-11 mm**

Assorbimento volumetrico a 150 bar
Fluid displacement at 150 bar **3,3 cm³**

Assorbimento volumetrico a 150 bar (A)
Fluid displacement at 150 bar (A) **2 cm³**

Posizione di montaggio
Mounting location **ore 3 - 9**

Raggio efficace (Re)
Effective rolling radius (Re) **(D/2)-25 mm**

Massa (con pastiglie)
Weight (with pads) **6,4 Kg**

Fluido di azionamento - Actuation fluid:

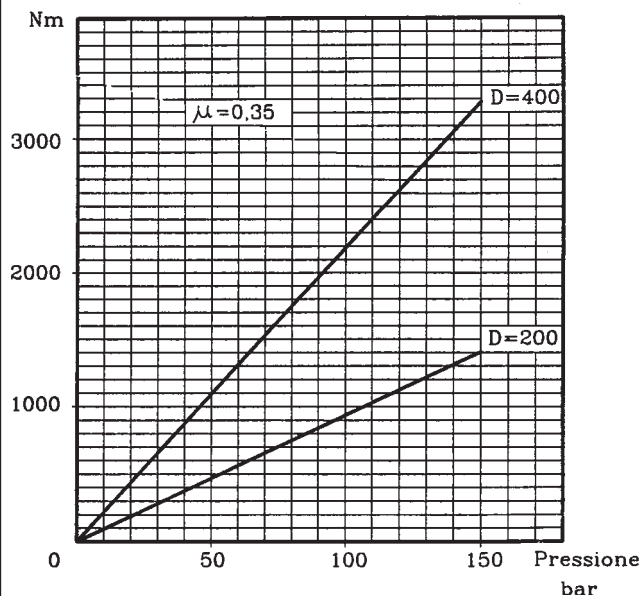
dis. 20.3195.11 / 51(A) liquido freni - *Brake fluid*

dis. 20.3195.31 / 71(A) olio minerale - *Hydraulic oil*

Prestazioni

Performances

Coppia frenante P48d

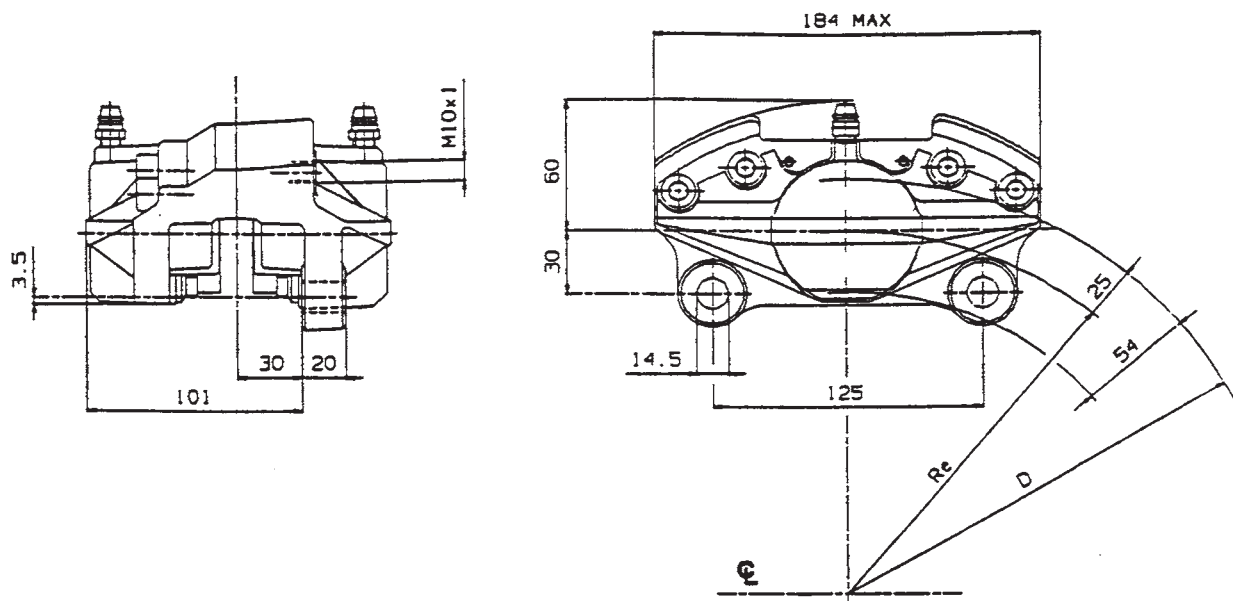


(A): Pinza con dispositivo anti arretramento dei pistoni
(per veicoli con velocità max inferiore a 30 km/h)
Brake caliper with pistons anti retracting device
(for vehicles with top speed lower than 30 km/h)

ENGINEERED BY
brembo

Pinza idraulica
Hydraulic brake caliper

P48d
20.4522.11/31



Caratteristiche Tecniche

Technical characteristics

Materiale costruzione
Construction material **ghisa**
cast iron

Numero e diametro pistoni
Pistons number and diameter **2x48 mm**

Pressione max di funzionamento
Max operating pressure **150 bar**

Numero e superficie pastiglie
Pads number and area **2x37 cm²**

Diametro disco (D)
Disc diameter **da 200 a 400 mm**

Spessore disco max e min usurato
Disc thickness, max and min worn **13 - 11 mm**

Assorbimento volumetrico a 150 bar
Fluid displacement at 150 bar **3,3 cm³**

Posizione di montaggio
Mounting location **ore 12**

Raggio efficace (Re)
Effective rolling radius (Re) **(D/2)-25 mm**

Massa (con pastiglie)
Weight (with pads) **6,4 Kg**

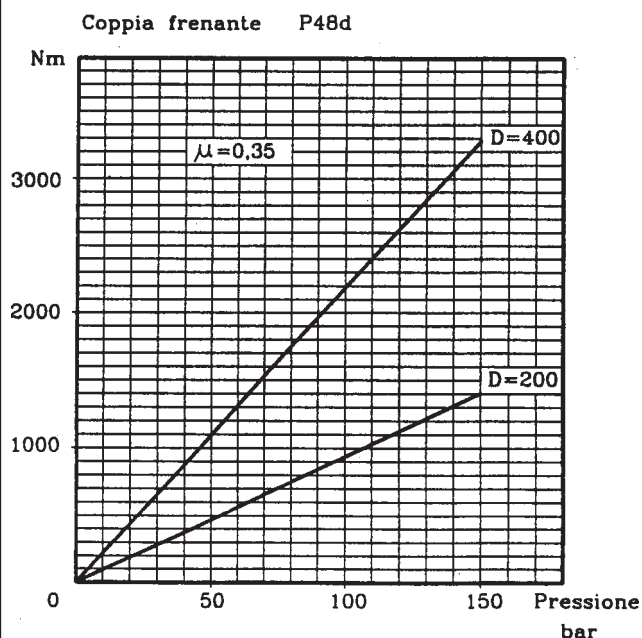
Fluido di azionamento - Actuation fluid:

dis. 20.4522.11 liquido freni - *Brake fluid*

dis. 20.4522.31 olio minerale - *Hydraulic oil*

Prestazioni

Performances

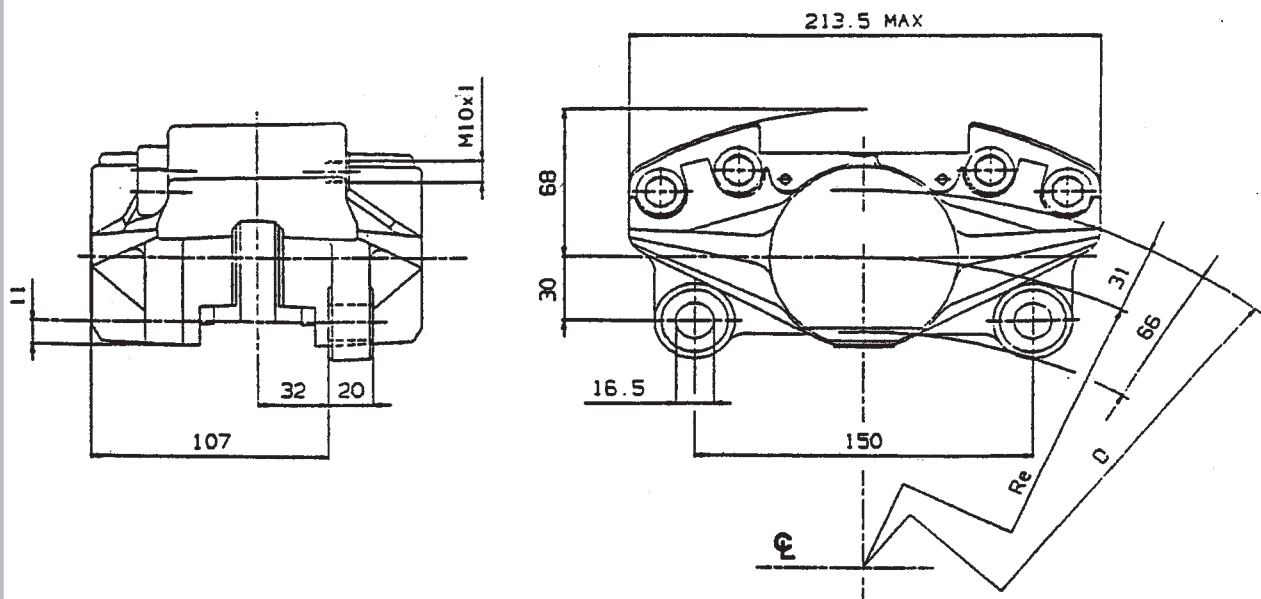


ENGINEERED BY
brembo

Pinza idraulica
Hydraulic brake caliper

P60a

20.2846.11/31
.51/71



Caratteristiche Tecniche *Technical characteristics*

Materiale costruzione
Construction material **ghisa**
cast iron

Numero e diametro pistoni
Pistons number and diameter **2x60 mm**

Pressione max di funzionamento
Max operating pressure **150 bar**

Numero e superficie pastiglie
Pads number and area **2x50 cm²**

Diametro disco (D)
Disc diameter **da 300 a 600 mm**

Spessore disco max e min usurato
Disc thickness, max and min worn **16 - 14,5 mm**

Assorbimento volumetrico a 150 bar
Fluid displacement at 150 bar **5,7 cm³**

Assorbimento volumetrico a 150 bar (A)
Fluid displacement at 150 bar (A) **3,8 cm³**

Posizione di montaggio
Mounting location **ore 3 - 9**

Raggio efficace (Re)
Effective rolling radius (Re) **(D/2)-31 mm**

Massa (con pastiglie)
Weight (with pads) **9,35 Kg**

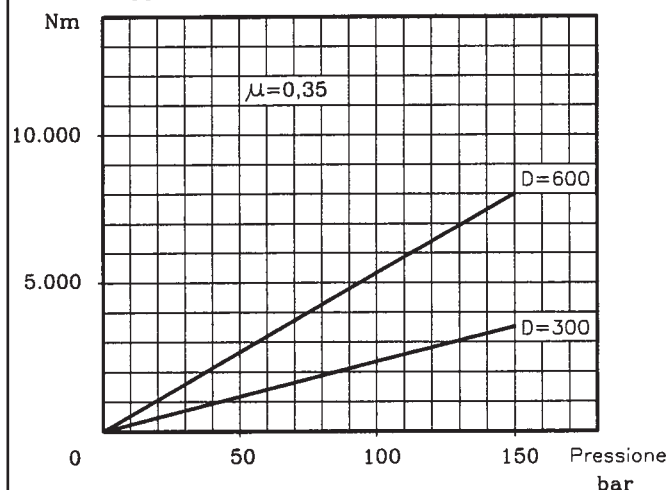
Fluido di azionamento - Actuation fluid:

dis. 20.2846.11 / 51(A) liquido freni - *Brake fluid*

dis. 20.2846.31 / 71(A) olio minerale - *Hydraulic oil*

Prestazioni *Performances*

Coppia frenante P60a



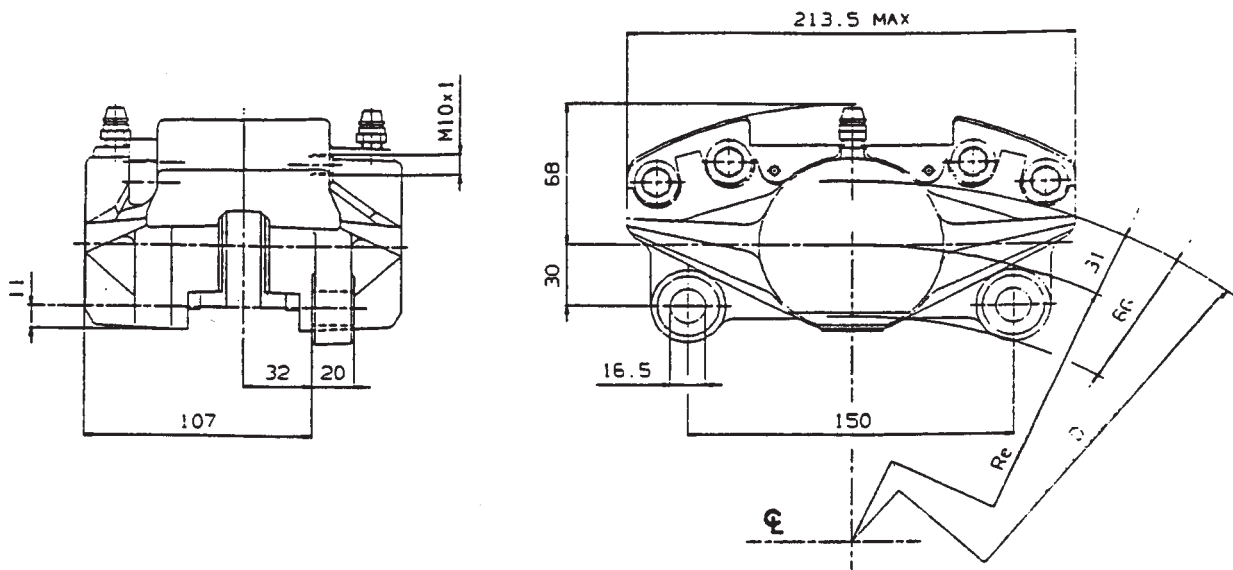
(A): Pinza con dispositivo anti arretramento dei pistoni
(per veicoli con velocità max inferiore a 30 km/h)
Brake caliper with pistons anti retracting device
(for vehicles with top speed lower than 30 km/h)

ENGINEERED BY
brembo

Pinza idraulica

Hydraulic brake caliper

P60a
20.3662.50



Caratteristiche Tecniche

Technical characteristics

Materiale costruzione
Construction material **ghisa**
cast iron

Numero e diametro pistoni
Pistons number and diameter **2x60 mm**

Pressione max di funzionamento
Max operating pressure **150 bar**

Numero e superficie pastiglie
Pads number and area **2x50 cm²**

Diametro disco (D)
Disc diameter **da 300 a 600 mm**

Spessore disco max e min usurato
Disc thickness, max and min worn **16 - 14,5 mm**

Assorbimento volumetrico a 150 bar
Fluid displacement at 150 bar **3,8 cm³**

Posizione di montaggio
Mounting location **ore 3 - 9**

Raggio efficace (Re)
Effective rolling radius (Re) **(D/2)-31 mm**

Massa (con pastiglie)
Weight (with pads) **9,35 Kg**

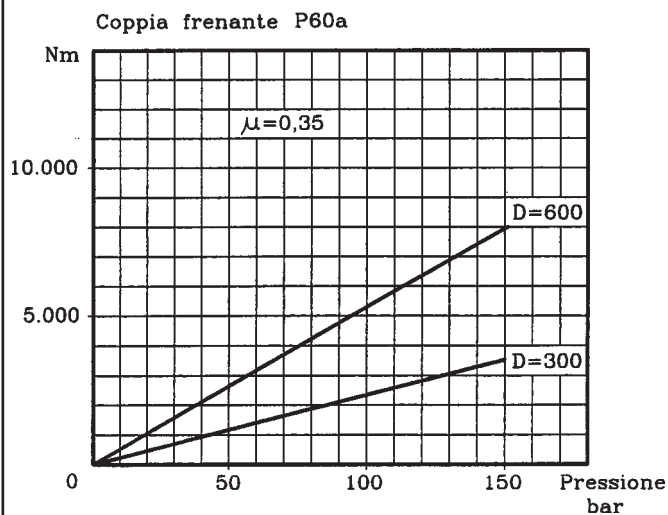
Fluido di azionamento - Actuation fluid:

dis. 20.3662. 50 **liquido freni - Brake fluid**

N.B.:
La pinza è indicata per veicoli con velocità max di 30 km/h

Prestazioni

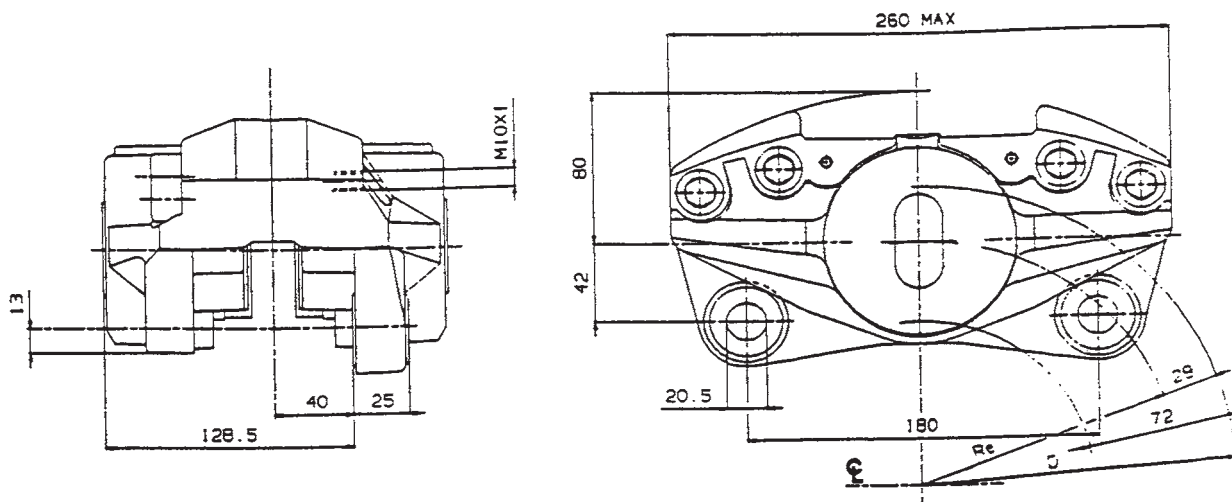
Performances



ENGINEERED BY
brembo

Pinza idraulica
Hydraulic brake caliper

P75b
20.2802.11/31
.51/71



Caratteristiche Tecniche

Technical characteristics

Materiale costruzione
Construction material **ghisa**
cast iron

Numero e diametro pistoni
Pistons number and diameter **2x75 mm**

Pressione max di funzionamento
Max operating pressure **150 bar**

Numero e superficie pastiglie
Pads number and area **2x74,5 cm²**

Diametro disco (D)
Disc diameter **da 300 a 700 mm**

Spessore disco max e min usurato
Disc thickness, max and min worn **22 - 20 mm**

Assorbimento volumetrico a 150 bar
Fluid displacement at 150 bar **9,2 cm³**

Posizione di montaggio
Mounting location **ore 3 - 9**

Raggio efficace (Re)
Effective rolling radius (Re) **(D/2)-29 mm**

Massa (con pastiglie)
Weight (with pads) **15,6 Kg**

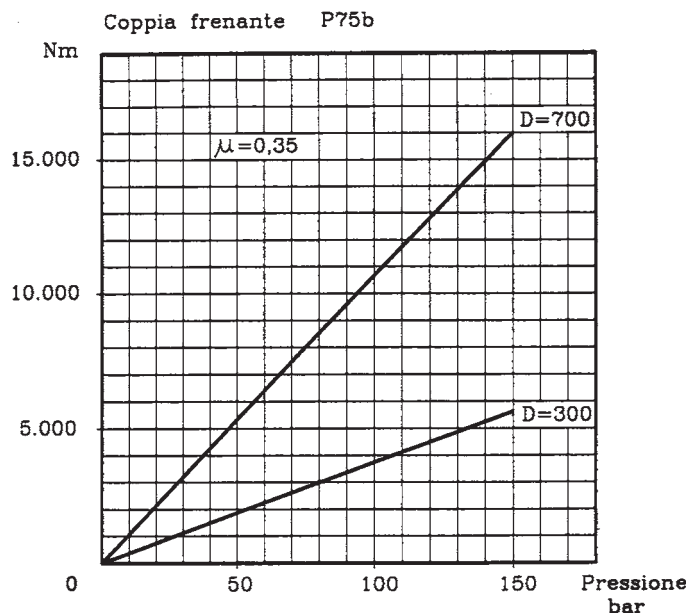
Fluido di azionamento - Actuation fluid:

dis. 20.2802.11 / 51(A) liquido freni - *Brake fluid*

dis. 20.2802.31 / 71(A) olio minerale - *Hydraulic oil*

Prestazioni

Performances



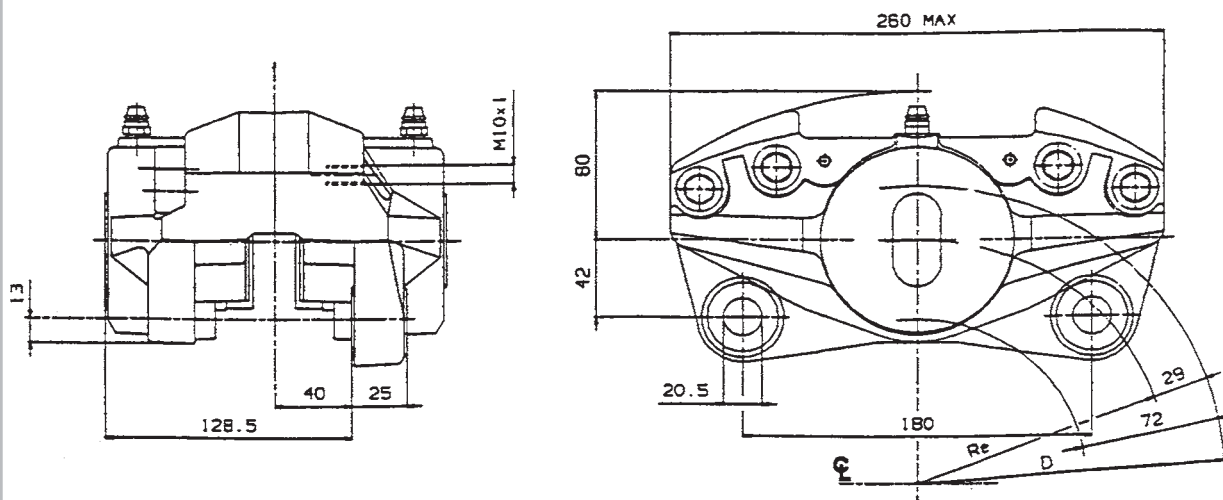
(A): Pinza con dispositivo anti arretramento dei pistoni
(per veicoli con velocità max inferiore a 30 km/h)
Brake caliper with pistons anti retracting device
(for vehicles with top speed lower than 30 km/h)

ENGINEERED BY
brembo

Pinza idraulica

Hydraulic brake caliper

P75b
20.3100.31



Caratteristiche Tecniche

Technical characteristics

Materiale costruzione
Construction material **ghisa**
cast iron

Numero e diametro pistoni
Pistons number and diameter **2x75 mm**

Pressione max di funzionamento
Max operating pressure **150 bar**

Numero e superficie pastiglie
Pads number and area **2x74,5 cm²**

Diametro disco (D)
Disc diameter **da 300 a 700 mm**

Spessore disco max e min usurato
Disc thickness, max and min worn **22 - 20 mm**

Assorbimento volumetrico a 150 bar
Fluid displacement at 150 bar **9,2 cm³**

Posizione di montaggio
Mounting location **ore 12**

Raggio efficace (Re)
Effective rolling radius (Re) **(D/2)-29 mm**

Massa (con pastiglie)
Weight (with pads) **15,6 Kg**

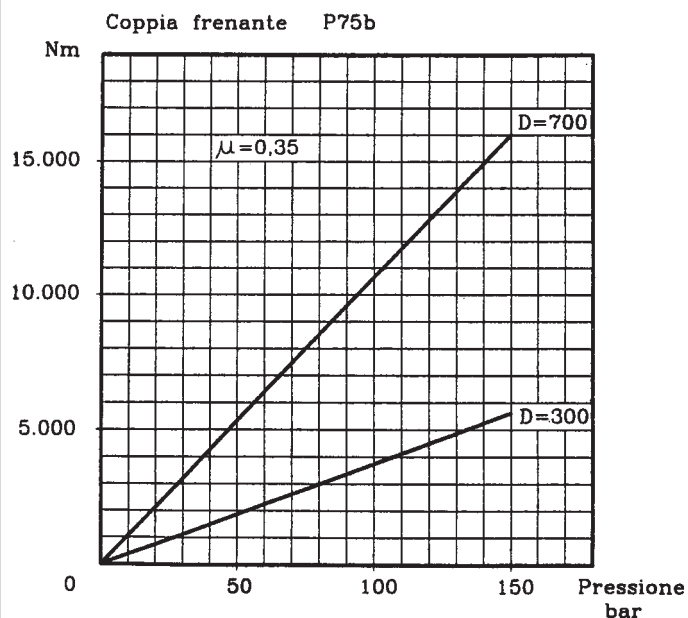
Fluido di azionamento - Actuation fluid:

dis. 20.3100.31

olio minerale - Hydraulic oil

Prestazioni

Performances



ENGINEERED BY
brembo

Pinza idraulica
Hydraulic brake caliper

P4.40a

20.4940.11/21
20.4950.11/21

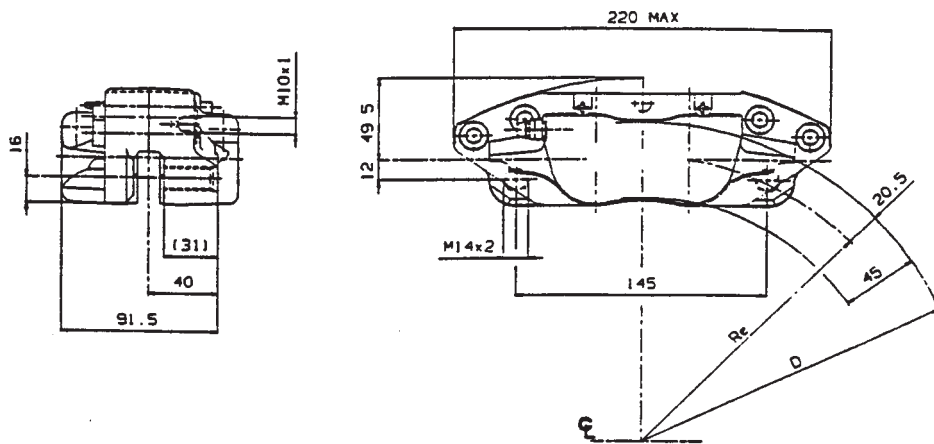


Figura A (.11)



Figura B (.21)



Caratteristiche Tecniche

Technical characteristics

Materiale costruzione
Construction material **ghisa**
cast iron

Numero e diametro pistoni
Pistons number and diameter **4x40 mm**

Pressione max di funzionamento
Max operating pressure **100 bar**

Numero e superficie pastiglie
Pads number and area **2x44 cm²**

Diametro disco (D)
Disc diameter **da 300 a 500 mm**

Spessore disco max e min usurato
Disc thickness, max and min worn **10,1 - 9 mm**

Assorbimento volumetrico a 100 bar
Fluid displacement at 100 bar **1,8 cm³**

Posizione di montaggio
Mounting location **ore 12**

Raggio efficace (Re)
Effective rolling radius (Re) **(D/2)-20,5 mm**

Massa (con pastiglie)
Weight (with pads) **5 Kg**

Fluido di azionamento - Actuation fluid:

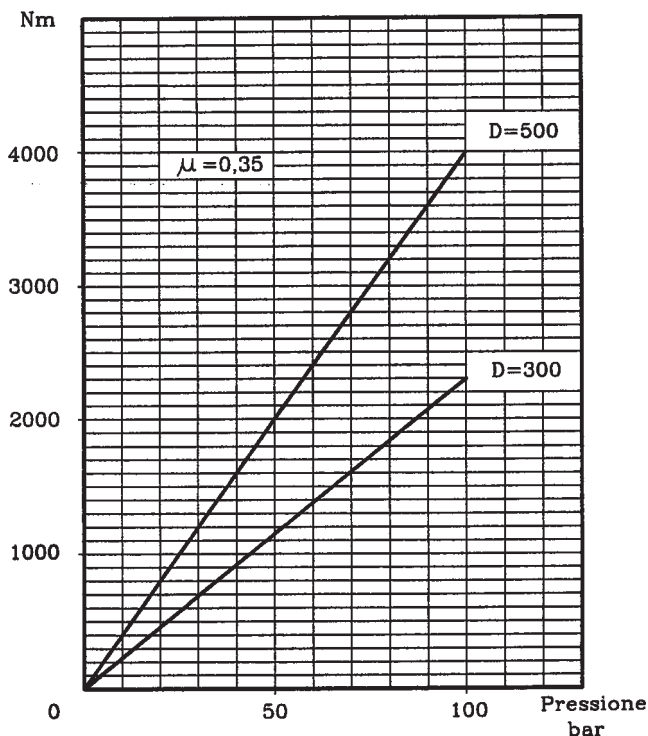
dis. 20.4940.11/21 liquido freni - *Brake fluid*

dis. 20.4950.11/21 olio minerale - *Hydraulic oil*

Prestazioni

Performances

Coppia frenante P4.40a



Ultimo aggiornamento:
ottobre 2001



Pinza idraulica

Hydraulic brake caliper

P4.42

20.4910.12/22

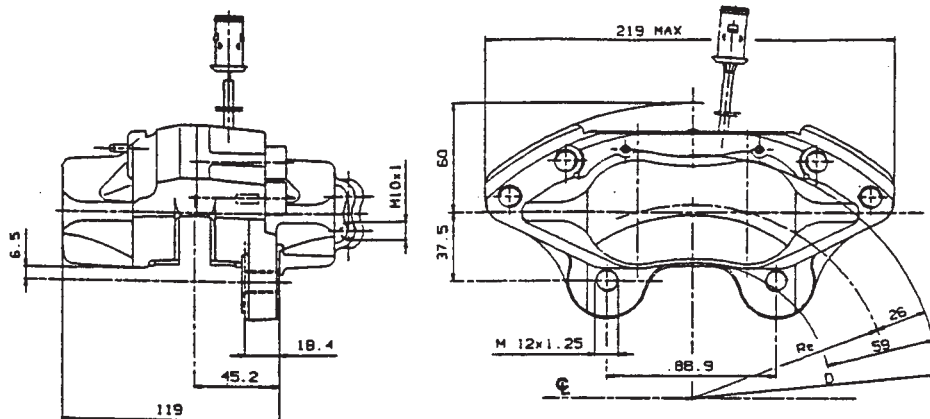


Figura A

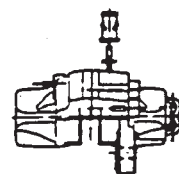
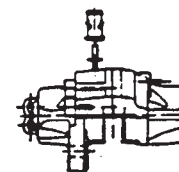


Figura B



Caratteristiche Tecniche

Technical characteristics

Materiale costruzione
Construction material **ghisa**
cast iron

Numero e diametro pistoni
Pistons number and diameter **4x42 mm**

Pressione max di funzionamento
Max operating pressure **100 bar**

Numero e superficie pastiglie
Pads number and area **2x59 cm²**

Diametro disco (D)
Disc diameter **da 250 a 290 mm**

Spessore disco max e min usurato
Disc thickness, max and min worn **14,2 - 12,8 mm**

Assorbimento volumetrico a 100 bar
Fluid displacement at 100 bar **2,1 cm³**

Posizione di montaggio
Mounting location **ore 9**

Raggio efficace (Re)
Effective rolling radius (Re) **(D/2)-26 mm**

Versioni
Type **20.4910.12 fig.A**
20.4910.22 fig.B

Massa (con pastiglie)
Weight (with pads) **7,5 Kg**

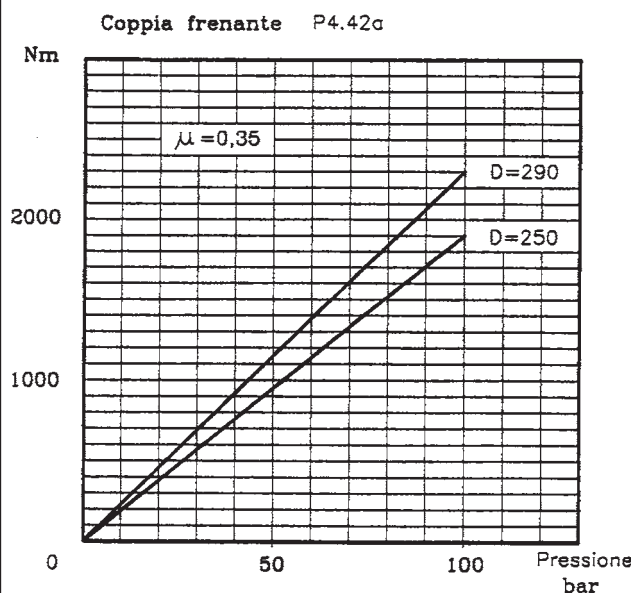
Fluido di azionamento - Actuation fluid:

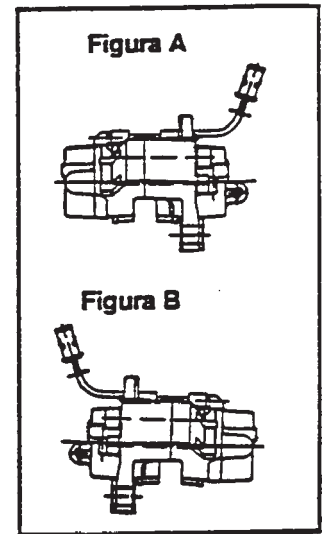
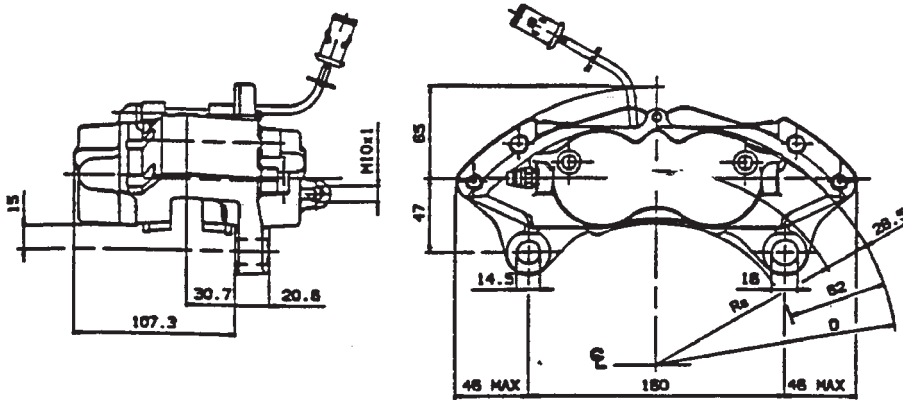
dis. 20.4910.12/22

Liquido freni - Brake fluid

Prestazioni

Performances





Caratteristiche Tecniche

Technical characteristics

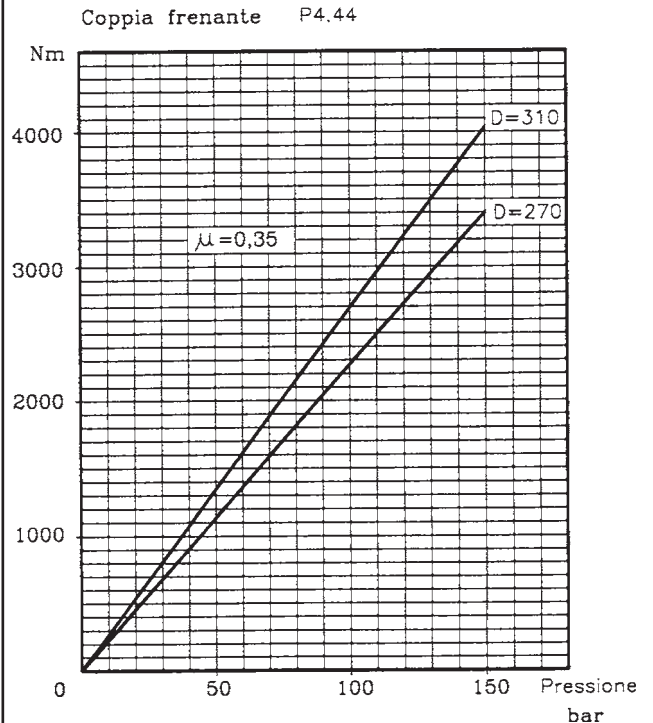
Materiale costruzione Construction material	ghisa <i>cast iron</i>
Numero e diametro pistoni Pistons number and diameter	4x44 mm
Pressione max di funzionamento Max operating pressure	150 bar
Numero e superficie pastiglie Pads number and area	2x76 cm²
Diametro disco (D) Disc diameter	da 270 a 310 mm
Spessore disco max e min usurato Disc thickness, max and min worn	16,2 - 13 mm
Assorbimento volumetrico a 100 bar Fluid displacement at 100 bar	3,6 cm³
Posizione di montaggio Mounting location	ore 3 - 9
Raggio efficace (Re) Effective rolling radius (Re)	(D/2)-28,5 mm
Massa (con pastiglie) Weight (with pads)	7,5 Kg

Fluido di azionamento - Actuation fluid:

dis. 20.5150.10/20
liquido freni - Brake fluid

Prestazioni

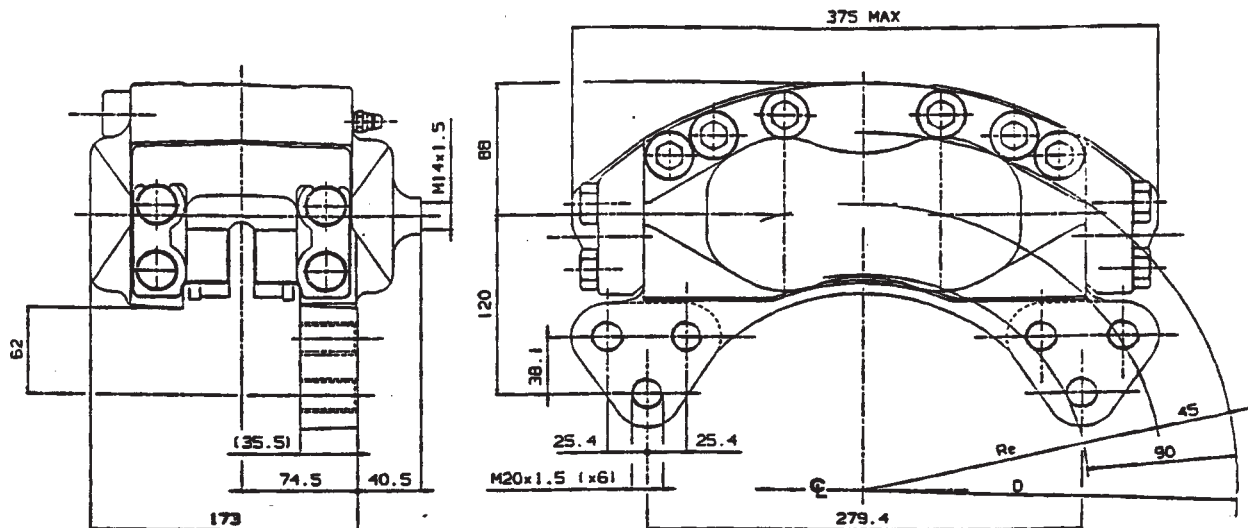
Performances



ENGINEERED BY
brembo

Pinza idraulica
Hydraulic brake caliper

P4.75a
20.2899.13



Caratteristiche Tecniche *Technical characteristics*

Materiale costruzione
Construction material ghisa
cast iron

Numero e diametro pistoni
Pistons number and diameter 4x75 mm

Pressione max di funzionamento
Max operating pressure 150 bar

Numero e superficie pastiglie
Pads number and area 2x153 cm²

Diametro disco (D)
Disc diameter da 380 a 670 mm

Spessore disco max e min usurato
Disc thickness, max and min worn 13,2 - 11,5 mm

Assorbimento volumetrico a 150 bar
Fluid displacement at 150 bar 12 cm³

Posizione di montaggio
Mounting location ore 3 - 12 - 9

Raggio efficace (Re)
Effective rolling radius (Re) (D/2)-45 mm

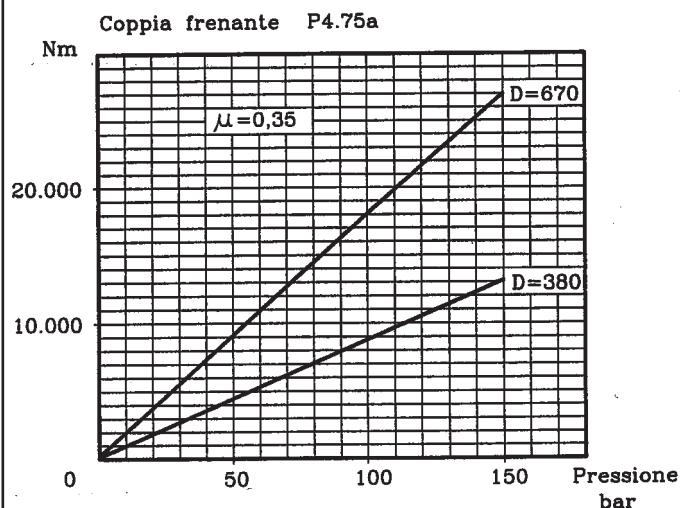
Massa (con pastiglie)
Weight (with pads) 39,2 Kg

Fluido di azionamento - Actuation fluid:

dis. 20.2899.13

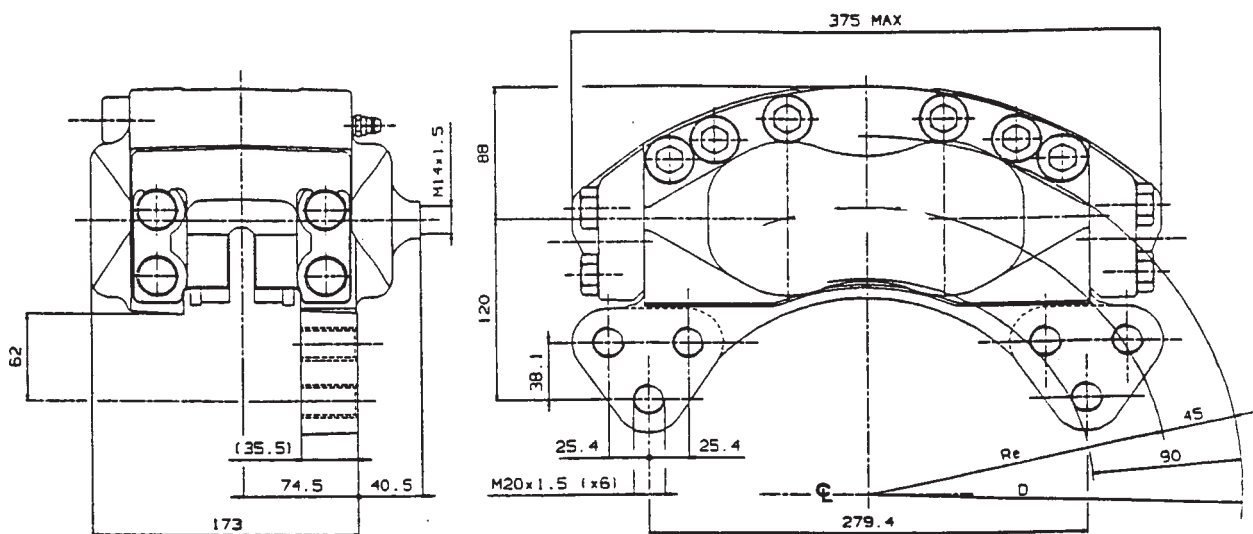
liquido freni - *Brake fluid*

Prestazioni *Performances*



ENGINEERED BY
brembo

Pinza idraulica Hydraulic brake caliper



Caratteristiche Tecniche Technical characteristics

Materiale costruzione
Construction material **ghisa**
cast iron

Numero e diametro pistoni
Pistons number and diameter **4x75 mm**

Pressione max di funzionamento
Max operating pressure **150 bar**

Numero e superficie pastiglie
Pads number and area **2x210 cm²**

Diametro disco (D)
Disc diameter **da 380 a 670 mm**

Spessore disco max e min usurato
Disc thickness, max and min worn **16,5 - 14,8 mm**

Assorbimento volumetrico a 100 bar
Fluid displacement at 100 bar **14 cm³**

Posizione di montaggio
Mounting location **ore 3 - 9 - 12**

Raggio efficace (Re)
Effective rolling radius (Re) **(D/2)-45 mm**

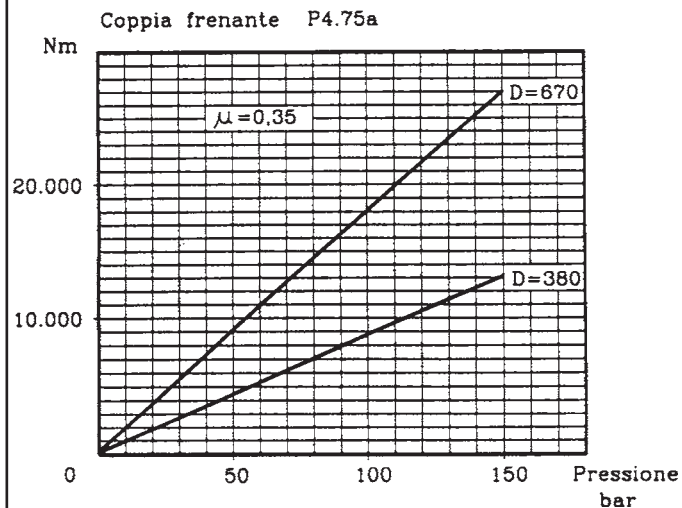
Massa (con pastiglie)
Weight (with pads) **40,7 Kg**

Fluido di azionamento - Actuation fluid:

dis. 20.2899.74 liquido freni - *Brake fluid*

dis. 20.2899.84 olio minerale - *Hydraulic oil*

Prestazioni Performances



RICAMBI PINZE FRENO – Spare parts for brake calipers

PINZE FRENO	KIT PASTIGLIE Lining set	KIT GUARNIZIONI Seal set	KIT PERNO Pin set	KIT SPURGO Bleeder set	KIT PISTONE Piston set	KIT PARAPOL. Rubber boot	KIT MOLLA Spring set	KIT CUFFIE Casing set	KIT COPERCHIO Cover set	KIT PIASTRA Plate set	KIT LAMIERINO Spacer set
20.2802.01		120.3250.10	120.3248.10	105.3246.11	120.5179.20	105.1502.10					
20.2802.11	107.1710.24	120.3250.10	120.3248.10	105.3246.11	120.5179.20	105.1502.10					
20.2802.15	107.1710.60	120.3250.10	120.3248.10	105.3387.20	120.5179.20	105.1502.10					107.3551.11
20.2802.31	107.1710.24	120.3250.11	120.3248.10	105.3246.11	120.5179.20	105.1502.10					
20.2802.51	107.1710.24	120.3250.10	120.3248.20	105.3246.11	120.5179.10	105.1502.10	120.2782.20				
20.2802.71	107.1710.24	120.3250.11	120.3248.20	105.3246.11	120.5179.10	105.1502.10	120.2782.20				
20.2805.55	107.1710.50	120.3250.10	120.3248.20	105.3246.11	120.5179.10	105.1502.10	120.2782.20				107.3551.11
20.2805.65	107.1710.60	120.3250.10	120.3248.20	105.3246.11	120.5179.10	105.1502.10	120.2782.20				107.3551.11
20.2846.11	107.2850.20	120.3249.12	120.3247.10	105.3246.11	120.2849.20	105.1502.10					
20.2846.31	107.2850.20	120.3249.13	120.3247.10	105.3246.11	120.2849.20	105.1502.10					
20.2846.51	107.2850.20	120.3249.12	120.3847.50	105.3246.11	120.2849.10	105.1502.10	120.2782.10				
20.2846.71	107.2850.20	120.3249.13	120.3847.50	105.3246.11	120.2849.10	105.1502.10	120.2782.10				
20.2899.13	107.4169.17	120.3203.16		105.3794.11	120.5179.40	105.1502.10		120.3560.10		120.3228.10	
20.3100.31	107.1710.24	120.3250.11	120.3248.10	105.3246.11	120.5179.20	105.1502.10					
20.3195.01		120.3203.10	120.3204.10	105.3246.11	120.3198.20	105.1502.10					
20.3195.11	107.3199.20	120.3203.10	120.3204.10	105.3246.11	120.3198.20	105.1502.10					
20.3195.31	107.3199.20	120.3203.11	120.3204.10	105.3246.11	120.3198.20	105.1502.10					
20.3195.51	107.3199.20	120.3203.10	120.3892.15	105.3246.11	120.3198.10	105.1502.10	120.2782.10				
20.3195.71	107.3199.20	120.3203.11	120.3892.15	105.3246.11	120.3198.10	105.1502.10	120.2782.10				
20.4522.11	107.3199.20	120.3203.10	120.3204.10	105.3246.11	120.3198.20	105.1502.10					
20.4522.31	107.3199.20	120.3203.11	120.3204.10	105.3246.11	120.3198.20	105.1502.10					
20.2899.74	107.4193.50	120.3203.16		105.3794.11	120.5179.40	105.1502.10		120.3560.10		120.3228.12	
20.2899.84	107.4193.50	120.3203.24		105.3794.11	120.5179.40	105.1502.10		120.3560.10		120.3228.12	
20.4940.11	107.4943.11	120.3203.21	120.3892.20	105.2812.13	120.3888.60						
20.4940.21	107.4943.11	120.3203.21	120.3892.20	105.2812.13	120.3888.60						
20.4950.11	107.4943.11	120.3203.53	120.3892.20	105.2812.13	120.3888.60						
20.4950.21	107.4943.11	120.3203.53	120.3892.20	105.2812.13	120.3888.60						
20.4960.11	107.4943.11	120.3203.52	120.3892.25	105.2812.13	120.3888.60						
20.4960.21	107.4943.11	120.3203.52	120.3892.25	105.2812.13	120.3888.60						
20.4910.12	107.4146.45	120.3203.14	220.3204.14	105.3246.16	120.4909.10			120.3905.10			
20.4910.22	107.4146.45	120.3203.14	220.3204.14	105.3246.16	120.4909.10			120.3905.10			
20.3662.50	107.2850.20	120.3249.12	120.3247.50	105.3246.11	120.2849.10	105.1502.10	120.2782.10				
20.2945.12	107.4183.20	120.2741.40	120.2742.10	105.3387.20	120.2252.20	105.1502.10					
20.5150.10	107.4146.57	120.3203.20	122.4839.70	105.3246.12	120.4909.20		120.5158.10				
20.5150.20	107.4146.57	120.3203.20	122.4839.70	105.3246.12	120.4909.20		120.5158.10				
20.5161.50	107.2686.32	120.2799.10	120.2800.10	105.2087.12	120.2679.20	105.1502.10			120.2688.10		
20.3556.40	107.4183.20	120.2741.10	120.2742.10	105.3387.10	120.2252.20	105.1502.10			120.3254.10		